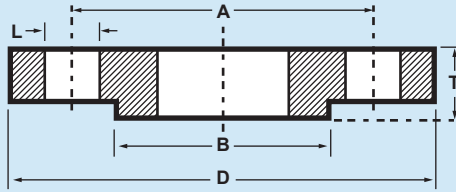


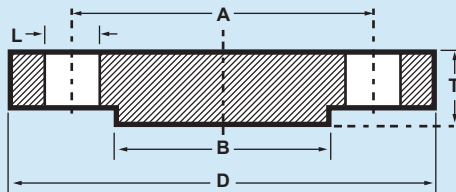


Raised face on Metric and ANSI Only

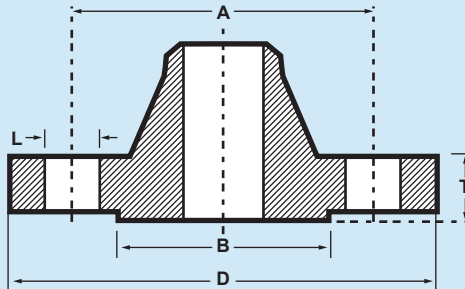
Plate Slip on Flange



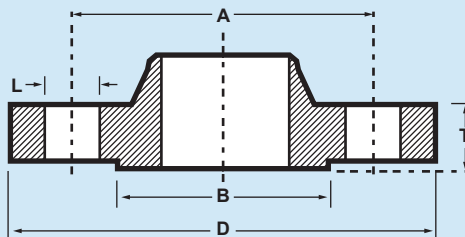
Blind Flange



Weld Neck Flange



Bossed Slip on Flange





Flanges: BS10 BS EN1092-1

All sizes in mm.

Nominal Pipe Size		Flange Rating	Diameter of Flange D	Bolt Circle Diameter A	Number of Bolts	Bolt Diameter	Diameter of Holes L	Diameter of Raised Face B	Thickness of Flange T		
									Forged	Plate	Blind
mm	in		mm	mm		mm	mm	mm	mm	mm	mm
15	1/2"	D	95	67	4	M12	14	-	4.8	4.8*	4.8*
		E	95	67	4	M12	14	-	6.3	4.8*	6.3*
		F	95	67	4	M12	14	-	9.5	9.5*	9.5*
		PN6	80	55	4	M10	11	40	12	12	12
		PN16	95	65	4	M12	14	45	14	14	14
		PN40	95	65	4	M12	14	45	16	14	16
20	3/4"	D	102	73	4	M12	14	-	4.8	4.8*	4.8*
		E	102	73	4	M12	14	-	6.3	6.7*	6.3*
		F	102	73	4	M12	14	-	9.5	9.5*	9.5*
		PN6	90	65	4	M10	11	50	14	14	14
		PN16	105	75	4	M12	14	58	16	16	16
		PN40	105	75	4	M12	14	58	18	14	18
25	1"	D	114	83	4	M12	14	-	4.8	4.8*	4.8*
		E	114	83	4	M12	14	-	7.1	7.1*	7.1*
		F	121	87	4	M16	19	-	9.5	9.5*	9.5*
		PN6	100	75	4	M10	11	60	14	14	14
		PN16	115	85	4	M12	14	68	16	16	16
		PN40	115	85	4	M12	14	68	18	14	18
32	1 1/4"	D	121	87	4	M12	14	-	6.3	6.3*	6.3*
		E	121	87	4	M12	14	-	8	8*	8*
		F	133	98	4	M16	17	-	12.5	12.5	12.5
		PN6	120	90	4	M12	14	70	14	16	14
		PN16	140	100	4	M16	18	78	16	18	16
		PN40	140	100	4	M16	18	78	18	18	18
40	1 1/2"	D	133	98	4	M12	14	-	6.3	6.3*	6.3*
		E	133	98	4	M12	14	-	8	8.7*	8.7*
		F	140	105	4	M16	17	-	12.5	12.5	12.5
		PN6	130	100	4	M12	14	80	14	16	14
		PN16	150	110	4	M16	18	88	16	18	16
		PN40	150	110	4	M16	18	88	18	18	18
50	2"	D	152	114	4	M16	17	-	8	8*	8*
		E	152	114	4	M16	17	-	9.5	9.5*	9.5*
		F	165	127	4	M16	17	-	15.9	15.9	15.9
		PN6	140	110	4	M12	14	90	14	16	14
		PN16	165	125	4	M16	18	102	18	20	18
		PN40	165	125	4	M16	18	102	20	20	20

* These Flanges will normally be supplied 12.5 mm thick



Flanges: BS10 BS EN1092-1

All sizes in mm.

Nominal Pipe Size		Flange Rating	Diameter of Flange D	Bolt Circle Diameter A	Number of Bolts	Bolt Diameter	Diameter of Holes L	Diameter of Raised Face B	Thickness of Flange T		
									Forged	Plate	Blind
mm	in		mm	mm		mm	mm	mm	mm	mm	mm
65	2 1/2"	D	165	127	4	M16	17	-	8	8*	8*
		E	165	127	4	M16	17	-	11	11*	11*
		F	184	146	8	M16	17	-	16	16	16
		PN6	160	130	4	M12	14	110	14	16	14
		PN16	185	145	4	M16	18	122	18	20	18
		PN40	185	145	8	M16	18	122	22	22	22
80	3"	D	184	146	4	M16	17	-	10	10*	10*
		E	184	146	4	M16	17	-	11	11*	11*
		F	203	165	8	M16	17	-	16	16	16
		PN6	190	150	4	M16	18	128	16	18	16
		PN16	200	160	8	M16	18	138	20	20	20
		PN40	200	160	8	M16	18	138	24	24	24
100	4"	D	216	178	4	M16	17	-	10	10*	10*
		E	216	178	8	M16	17	-	14	14	14
		F	229	191	8	M16	17	-	19	19	19
		PN6	210	170	4	M16	18	148	16	18	16
		PN16	220	180	8	M16	18	158	20	22	20
		PN40	235	190	8	M20	22	162	24	26	24
125	5"	D	254	210	8	M16	17	-	12.7	12.7	12.7
		E	254	210	8	M16	17	-	14.3	14.3	14.3
		F	279	235	8	M20	22	-	22.2	22.2	22.2
		PN6	240	200	8	M16	18	178	18	20	18
		PN16	250	210	8	M16	18	188	22	22	22
		PN40	270	120	8	M24	26	188	26	28	26
150	6"	D	279	235	8	M16	17	-	12.7	12.7	12.7
		E	279	235	8	M20	22	-	17.5	17.5	17.5
		F	305	260	12	M20	22	-	22.2	22.2	22.2
		PN6	265	225	8	M16	18	202	18	20	18
		PN16	285	240	8	M20	22	212	22	24	22
		PN40	300	250	8	M24	26	218	28	30	28
200	8"	D	337	292	8	M16	17	-	12.7	12.7	12.7
		E	337	292	8	M20	22	-	19	19	19
		F	368	324	12	M20	22	-	25.4	25.4	25.4
		PN6	320	280	8	M16	18	148	20	22	20
		PN10	340	295	8	M20	22	268	24	24	24
		PN16	340	295	12	M20	22	268	24	26	24
		PN25	360	310	12	M24	26	278	30	32	30
		PN40	375	320	12	M27	30	162	34	36	34

*These Flanges will normally be supplied 12.5mm thick.

Tel. 01472 241461

Fax. 01472 241620

E mail:sales@pipefit.co.uk



Flanges: BS10 BS EN1092-1

All sizes in mm.

Nominal Pipe Size	Flange Rating	Diameter of Flange D	Bolt Circle Diameter A	Number of Bolts	Bolt Diameter	Diameter of Holes L	Diameter of Raised Face B	Thickness of Flange T			
								Forged	Plate	Blind	
mm	in	mm	mm		mm	mm	mm	mm	mm	mm	
250	10	D	406	356	8	M20	22	-	16	16	16
		E	406	356	12	M20	22	-	22	22	22
		F	432	381	12	M22	25	-	29	29	29
		PN6	375	335	12	M16	18	312	22	24	22
		PN10	395	350	12	M20	22	320	26	26	26
		PN16	405	355	12	M24	26	320	26	29	26
		PN25	425	370	12	M27	30	335	32	35	32
PN40	450	385	12	M30	33	345	38	42	38		
300	12"	D	457	406	12	M20	22	-	19	19	19
		E	457	406	12	M22	25	-	25	25	25
		F	489	438	16	M22	25	-	32	32	32
		PN6	440	395	12	M20	22	365	22	24	22
		PN10	445	400	12	M20	22	370	26	26	26
		PN16	460	410	12	M24	26	378	28	32	28
		PN25	485	430	16	M27	30	395	34	38	34
PN40	575	450	16	M30	33	410	42	48	42		
350	14"	PN6	490	445	12	M20	22	415	22	26	22
		PN10	505	460	16	M20	22	430	26	28	26
		PN16	520	470	16	M24	26	438	30	35	30
		PN25	555	490	16	M30	33	450	38	42	38
		PN40	580	510	16	M33	36	465	46	54	46
400	16"	PN6	540	495	16	M20	22	465	22	28	22
		PN10	565	515	16	M24	26	482	26	32	26
		PN16	580	525	16	M27	30	490	32	38	32
		PN25	620	550	16	M33	36	505	40	46	40
		PN40	660	585	16	M36	39	535	50	60	50
450	18"	PN6	595	550	16	M20	22	518	22	30	24
		PN10	615	565	20	M24	26	530	28	36	28
		PN16	640	585	20	M27	30	545	34	42	36
		PN25	670	600	20	M33	36	555	42	50	44
		PN40	685	610	20	M36	39	555	50	66	54
500	20"	PN6	645	600	20	M20	22	570	24	30	24
		PN10	670	620	20	M24	26	585	28	38	28
		PN16	715	650	20	M30	33	610	34	46	36
		PN25	730	660	20	M33	36	615	44	56	45
		PN40	755	670	20	M39	42	615	52	72	56
600	24"	PN6	755	705	20	M24	26	670	24	32	34
		PN10	780	725	20	M27	30	685	28	42	34
		PN16	840	770	20	M33	36	725	36	52	44
		PN25	845	770	20	M36	39	720	46	68	54
		PN40	890	795	20	M45	48	735	60	84	70

*These Flanges will normally be supplied 12.5mm thick.

Tel. 01472 241461

Fax. 01472 241620

E mail:sales@pipefit.co.uk



Flanges: Approximate Weights (kgs)

Nominal Pipe Size		Table D		Table E		Table F	
		Bossed Slip On	Blind	Bossed Slip On	Blind	Bossed Slip On	Blind
15	1/2"	0.23	0.23	0.34	0.23	0.57	0.91
20	3/4"	0.34	0.34	0.45	0.34	0.68	0.91
25	1"	0.45	0.57	0.57	0.57	0.91	1.36
32	1 1/4"	0.68	0.79	0.79	0.91	1.36	1.59
40	1 1/2"	0.79	0.91	1.02	1.13	1.59	1.81
50	2"	1.13	1.13	1.36	1.36	2.61	2.04
65	2 1/2"	1.36	1.36	1.7	1.59	3.18	3.18
80	3"	1.81	2.27	2.27	2.72	3.97	4.54
100	4"	2.61	3.18	3.18	3.63	5.44	7.26
125	5"	4.42	5.1	4.76	5.9	9.07	10.89
150	6"	5.33	6.8	7.48	8.62	10.89	12.25
200	8"	7.48	9.98	9.98	11.79	15.88	19.96
250	10"	11.57	19.5	15.42	22.23	21.77	30.84
300	12"	15.42	28.58	20.41	33.11	34.47	48.99



Flanges: Approximate Weights (kgs)

Nominal Pipe Size mm in		PN6			PN10			PN16		
		Bossed Slip On and Weld Neck	Plate Slip On	Blind	Bossed Slip On and Weld Neck	Plate Slip On	Blind	Bossed Slip On and Weld Neck	Plate Slip On	Blind
15	1/2"	0.39	0.36	0.45				0.65	0.61	0.74
20	3/4"	0.59	0.54	0.70				0.95	0.87	1.04
25	1"	0.75	0.71	0.87				1.14	1.05	1.29
32	1 1/4"	1.05	1.10	1.20				1.69	1.68	1.80
40	1 1/2"	1.18	1.16	1.46	For sizes			1.86	1.84	2.17
50	2"	1.34	1.33	1.68	15mm to 150mm			2.53	2.49	2.93
65	2 1/2"	1.67	1.70	2.25	use PN16			3.06	3.14	3.68
80	3"	2.71	2.70	3.50				3.70	3.35	4.71
100	4"	3.24	2.99	5.00				4.62	4.01	6.00
125	5"	4.49	4.00	7.10				6.30	5.10	8.60
150	6"	5.15	4.56	8.85				7.75	6.90	11.10
200	8"	7.78	6.30	12.05	11.30	9.00	16.45	11.30	9.00	16.45
250	10"	10.80	8.70	20.25	14.70	11.30	25.65	15.60	13.75	25.65
300	12"	14.00	11.00	29.35	17.40	12.95	35.35	22.00	17.80	35.35
350	14"		15.15	45.00		19.55	50.00		27.40	50.00
400	16"					26.95	64.40		35.10	64.40
450	18"					33.25	90.00		45.30	90.00
500	20"					40.35	111.00		64.50	111.00
600	24"					53.50	189.00		94.00	189.00

Nominal Pipe Size mm in		PN25			PN40		
		Bossed Slip On and Weld Neck	Plate Slip On	Blind	Bossed Slip On and Weld Neck	Plate Slip On	Blind
15	1/2"				0.87	0.74	0.76
20	3/4"				1.06	0.87	1.10
25	1"				1.29	1.08	1.35
32	1 1/4"				1.88	1.73	2.00
40	1 1/2"	For sizes			2.33	1.94	2.33
50	2"	15mm to 150mm			2.82	2.57	3.30
65	2 1/2"	use PN40			3.74	3.11	4.35
80	3"				4.75	4.20	5.60
100	4"				6.52	6.00	7.60
125	5"				9.07	8.00	10.00
150	6"				11.80	10.00	14.00
200	8"	17.00	13.80	22.00	21.50	16.70	28.00
250	10"	24.40	19.30	32.00	34.90	28.00	44.00
300	12"	31.20	26.05	46.00	49.70	39.60	65.00
350	14"		40.50			63.00	
400	16"		54.00			94.00	
450	18"						
500	20"						
600	24"						